



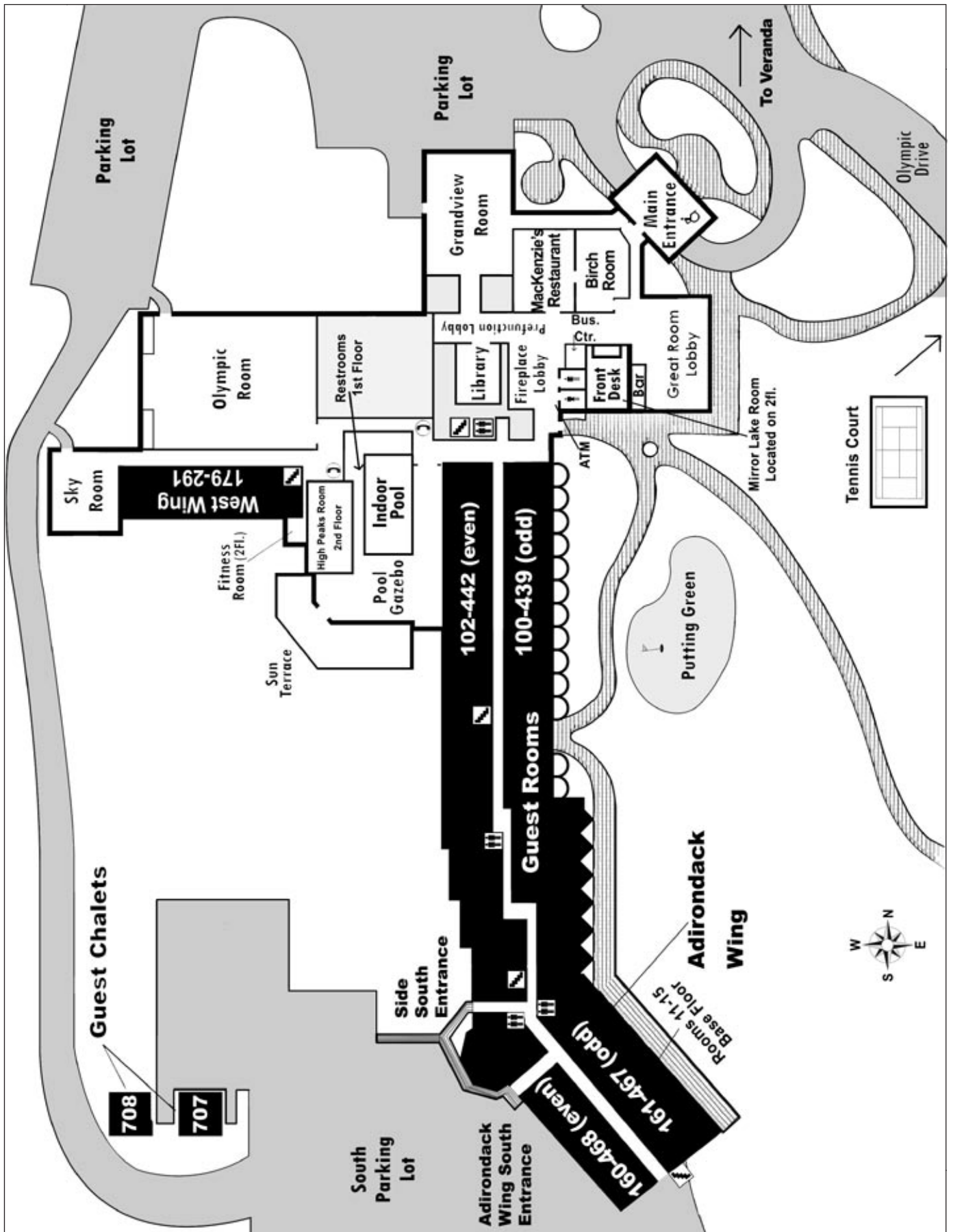
**CROWNE PLAZA®**

---

**RESORT & GOLF CLUB  
LAKE PLACID**

**THE PLACE TO MEET.**

**REFERENCE GUIDE**



## AMENITIES

- + Located in village center, overlooking the lake
- + Full-service resort spanning over 1,000 acres
- + Over 30,000 square feet of event space
- + 245 Room full-service resort hotel (four floors)
- + Free high speed wireless internet access in all guest rooms and lobby areas
- + Business Center with 2 computer workstations
- + 4 Unique restaurants
- + 45 Holes Championship golf at the Lake Placid Club
 

|                 |        |             |
|-----------------|--------|-------------|
| Links Course    | Par 71 | 7,006 yards |
| Mountain Course | Par 70 | 6,156 yards |
| Pristine Nine   | Par 29 | 1,534 yards |
- + Pro Shop, driving range and practice green
- + Indoor pool, whirlpool & fitness room
- + 6 Tennis courts (including 4 Har-Tru)
- + Private beach on Mirror Lake
- + Scenic boat tours on Lake Placid Lake
- + 20 km Cross-Country Ski Center
- + Laundry Machines
- + ADA compliant and Federal Government Fire
- + Safety approved facility  
FEMA # NY0196

## SERVICES

- + Crowne Meetings Director and Professional Conference Planning Staff
- + Complete Audio Visual Services
- + Business services, including fax, copying
- + Olympic Room and Grandview room equipped with 208V electrical outlets
- + Spouse Programs
- + VIP Welcome Gift Services

## SECURITY

The hotel will not assume responsibility for the damage or loss of any materials or articles left in the hotel either prior to or following a function. Arrangements can be made for special security for exhibits and displays for an additional charge.

## RECEIVING SHIPMENTS

All packages shipped to the Resort should be sent to the attention of the group's name with the conference dates, and its Conference Service Manager. Limited space is available for large items.

## CELL PHONE SERVICE

The Crowne Plaza Resort & Golf Club is located within the coverage area for the following cell phone service providers: Verizon Wireless, Cingular, Nextel, and Sprint.

## TAXES AND SERVICE CHARGES

Unless exempt, a 7.75% New York State sales tax is applied to all applicable charges. Room charges are also subject to an additional 3% County Bed Tax. All food, beverage, and A/V charges are subject to a taxable 18% Service Charge.

## GUEST ROOM DESCRIPTIONS

- + Traditional Rooms in Main Hotel: 2 Double beds, 2 Queen beds, or 1 King bed, Hotel's choice.
- + King Jacuzzi Rooms in Main Hotel: overlook lake, King bed & Jacuzzi.
- + King Fireplace Rooms in Main Hotel: overlook mountains, King bed, Jacuzzi & gas burning fireplace.
- + Two-Room Family Units in Main Hotel: overlook lake, King bed, Murphy double bed, a Pull-out Sofa & full bathroom.
- + Adirondack Wing Two Queen Bedroom: overlook mountains or lake with walk-out patio or balcony and in-room safe.
- + Adirondack Wing King Bedroom: overlook mountain or lake, with fireplace, 2 person Whirlpool tub and separate stand-up shower unit and walk-out patio or balcony and in-room safe.
- + Adirondack King Suite - 1 Bedroom suite in our Adirondack wing, features a living room with fireplace and queen pullout couch; kitchen with stovetop, refrigerator and microwave; bed-room with king pillow top bed, bathroom with large jetted tub and separate shower; terrace and in-room safe.
- + Adirondack King Executive Suite - 1 Bedroom suite in our Adirondack wing, features an expansive living room with fireplace, flat screen TV, queen Murphy bed, queen pullout couch, kitchen with stovetop, full-size refrigerator and microwave; bedroom with king pillow top bed, 2 bathrooms, one with large jetted tub; terrace and in-room safe.
- + Chalets: living area with kitchenette, wood burning fireplace & pull-out couch, master bedroom with King bed, Jacuzzi, 2 full bathrooms & loft with 2 twin beds.
- + All guest rooms have refrigerator/freezer, coffeemaker, iron/ironing board, data ports, wireless high speed internet and in-room movies/games, as well as Crowne Plaza's Sleep Advantage Program. Rollaway beds are available upon request at a nightly charge of \$15.00 plus 7.75% NYS sales tax, unless exempt.

## CONFERENCE FACILITIES

For groups of 10 to 700, our 24 multipurpose rooms comprising 30,000 square feet of versatile conference and function space is unmatched by any other facility in Lake Placid. In addition to our convenient on-site facilities we offer off-site locations for your special events. Our Conference Service Managers are available to work closely with meeting planners to select the room(s) most appropriate for their meetings.

### HIGHLIGHTS OF EVENT SPACE

**Olympic Room:** Measuring 6,730 square feet, the Olympic room is perfectly suited for large functions.

**High Peaks Room:** Finished with beautiful Adirondack log detail, ideal for smaller groups to work or meet.

**Great Room Lobby:** Adirondack Great Camp style luxury, with comfy sofas and chairs, a massive field stone fireplace and the most amazing views of Mirror Lake and the Adirondack mountains.

**Golf House at the Lake Placid Club:** The Golf House offers an unparalleled setting with its Adirondack decor and dramatic views of the High Peak Sierra.

**Boat House at the Lake Placid Club:** Situated directly on Mirror Lake, the Boat House provides an exclusive venue for summer functions.

A full listing of our meeting and event space is provided in the meeting room grid.

## FOOD AND BEVERAGE

Our award winning culinary staff and conference planners are committed to providing uncompromising service, remarkable cuisine, and outstanding hospitality.

### RESTAURANTS

#### Veranda

This stately manor was constructed with painstaking attention to the masonry of its fireplaces and woodworking throughout. Whether you choose to dine on Veranda's covered deck overlooking the lake, or amidst the classic appointments of the Hearth room, the ambiance is uniquely Adirondack, and the food a culinary delight.

#### The Boat House

A perfect Adirondack evening begins with the Boat House Restaurant located on the pristine shores of Mirror Lake. With its Adirondack Great Camp atmosphere, spectacular sunsets, views & covered deck extending over the water, the Boat House affords a truly memorable vantage point. The menu features fresh seafood, pasta dishes, savory items from the grill and garden fresh salads.

#### The Golf House

Overlooking the historic 100 year old Lake Placid Club golf courses, the Golf House Restaurant provides sweeping views of the High Peaks' sierra. While indoors you'll discover open beam ceilings, a massive stone fireplace and magnificent antler chandeliers.

#### MacKenzie's

MacKenzie's Restaurant is conveniently located off the main lobby area of the hotel. In addition to serving breakfast and lunch, MacKenzie's offers an Italian/American dinner menu.

#### Great Room Lobby & Bar

Adirondack Great Camp style luxury, with comfy sofas and chairs, a massive field stone fireplace and the most amazing views of Mirror Lake and the Adirondack mountains.

## MUSIC AND ENTERTAINMENT

Our conference planners will be happy to assist with setting up any type of music or entertainment for your meeting.

## GOLF TOURNAMENT PLANNING

Let us assist you in planning your golf outing at our award winning golf courses, the only 45-hole facility in the region. The par 71 Links Course, measuring 6,936 yards, has been rated 4-Stars by *Golf Digest's Places to Play*. Rated excellent by *Zagat*.

#### Golf Services:

- + Guaranteed Tee Times
- + Fully irrigated courses in Lake Placid
- + Golf Tournament Planning and Coordinating
- + Lessons with PGA Certified Professional
- + Golf bag storage and club rental
- + Golf retail gift items
- + Locker rooms

## SPECIAL EVENT IDEAS

### Olympic Corporate Challenge

Return home from the Olympic Village with your own hard-earned gold medal. Ideal for promoting teamwork, spirit, camaraderie, and fun. Challenge your staff or group to a pulse-pounding adventure and discover that nothing builds camaraderie like screaming down the 1980 track in a bobsled, racing laps on the speed skating oval or going head-to-head in a game of hockey.

### Ski Jump Receptions

Enjoy a reception in the glass-enclosed observation deck atop the 120-meter Olympic Ski Jump. The observatory offers panoramic views of the Adirondack High Peaks and wilderness lakes.

### Boat Cruises

Cruise the pristine waters of Lake Placid aboard a turn-of-the-century wooden touring vessel. Narrated excursions pass many lavish Adirondack Great Camps in the shadow of Whiteface Mountain. Special cocktail cruises can be arranged.

### Camp Days

Enjoy our exclusive property at our Trout Preserve featuring fishing, boating, and a myriad of other outdoor events that are fun for all!

### Figure Skating Shows

How about an ice show at the Olympic Arena exclusively for your group? Even performances with figure skating's top performers, such as Jamie Salé, David Pelletier and Scott Hamilton, can be arranged.

## SPOUSE PROGRAMS

Ask your Conference Planner about specially tailored spouse programs:

- + Olympic Site Activities and Tour
- + Craft Workshops and Craft Tours
- + Area Attractions Tours
- + Fitness Programs and Game Tournaments
- + Nature Walks
- + Downtown Shopping
- + Day trips to Montreal

## NEARBY RECREATION

Lake Placid provides for an extraordinary number of recreational activities, including:

- + Alpine skiing and snowboarding- 8 MI
- + Boating- .25 MI
- + Bobsled and Luge rides- 5 MI
- + Canoeing & kayaking- .25 MI
- + Whitewater rafting- 15 MI
- + Fly fishing- 2 MI
- + Hiking trails in the Adirondack High Peaks- 2 MI
- + Horseback riding- 7 MI
- + Ice climbing & rock climbing- 15 MI
- + Ice hockey and ice skating- 0 MI
- + In-line skating- .5 MI
- + International sports competitions- 0 MI
- + Laser tag- .5 MI
- + Mountain biking- 2 MI
- + Miniature golf- 1 MI
- + Paintball- 15 MI
- + Scenic airplane rides- 2 MI
- + Shopping on Main Street- .25 MI
- + Snowmobiling- .5 MI
- + Snowshoeing- 1 MI

## AREA POINTS OF INTEREST

### Olympic Venues - within 10 MI

Learn about the Olympic Center, site of the skating and hockey events during the 1932 and 1980 Olympic Winter Games. Tour the site of the ski jumping events during the 1980 Olympic Winter Games. Ride the chairlift and elevator to the Sky Deck at the top of the 26-story, 120-meter tower for a spectacular view of the surrounding wilderness. At the Kodak Sports Park, watch world-class freestyle skiers. Explore the legacy of the Games at the Olympic Museum.

### Olympic Bobsled and Luge Rides - 5 MI

Become an Olympic athlete for a day. Take an exhilarating ride on the 'Summer Storm' at Mt. Van Hoevenberg, site of the bobsled, luge, cross country skiing and biathlon events during the 1980 Olympics. Rocket down the only dedicated bobsled run in the U.S. with professional drivers and brakemen in a bobsled on wheels.

### Veterans Memorial Highway - 15 MI

An eight-mile climb from the crossroads in Wilmington, ascending to the summit of Whiteface, the fifth highest mountain in the Adirondacks. At the summit parking area, take a short hike to the peak or take the in-mountain elevator for a truly amazing 360-degree view.

### Whiteface Mountain Gondola Skyride - 10 MI

Begin at the base lodge and ride the new high speed gondola to the top of Little Whiteface Mountain. At the summit (3,600 feet), an observation deck and picnic tables await. A nature trail from the mid-mountain level offers an exhilarating and relatively easy hike alongside the waterfalls and pools of the Stag Brook.

### Lake Placid Center for the Arts - 1 MI

In its third decade of bringing the arts to the Adirondacks, the LPCA is a year-round multi-purpose theater facility. Dedicated to presenting exceptional programming, the Arts Center hosts a myriad of dance, music, children's programs, films, art and opera.

### Lake Placid Sinfonietta - 1 MI

The Lake Placid Sinfonietta is a professional chamber orchestra that is in residence in Lake Placid for six weeks every summer. Musicians from major orchestras and universities around the country join to present superb classical performances. Free Concerts in the Park - Wednesdays in July and August.

### John Brown Farm State Historic Site - 2 MI

Tour the last home and burial site of the famed abolitionist. Open year round.

### Great Camps - 20-30 MI

Visit the White Pine Camp, the 1926 Summer White House of Calvin Coolidge, or take a tour of Camp Santanoni, an Adirondack Great Camp on 12,500 acres of state forest preserve.

### Adirondack Museum - 61 MI

Colorful Adirondack history, nationally acclaimed exhibits and spectacular view await you at the Adirondack Museum at Blue Mountain Lake.

### The Wild Center - 25 MI

Live exhibits, and chances to hike and explore our 31-acre campus with naturalist guides or on your own. Theaters with high definition films, plenty of hands-on nature, and hundreds of live animals from rare native trout, to river otters, to turtles the size of walnuts and many other often hard-to-see residents of the woods and waters.

## **MONITORS & VCR'S**

---

25" TV MONITOR WITH VCR  
VCR - PLAYER ONLY  
DVD/VCR  
27" COLOR TV MONITOR

## **PROJECTORS**

---

CAROUSEL 35 MM SLIDE  
PROJECTOR WIRELESS REMOTE  
SLIDE TRAY  
OVERHEAD PROJECTOR  
HI-INTENSITY OVERHEAD  
PROJECTOR 4000 LUMENS  
LCD PROJECTOR WITH REMOTE  
(1 WITH 3,200 LUMENS & 1 WITH 1,500 LUMENS)

## **SCREENS**

---

5' x 5' PORTABLE  
6' x 6' PORTABLE  
7' x 7' PORTABLE  
8' x 8' PORTABLE  
10' x 10' SKY ROOM  
12' x 12' OLYMPIC ROOM

## **MICROPHONES**

---

XLR MICROPHONES  
TABLE TOP MIC STAND  
FLOOR MIC STAND  
LAVALIERE WIRED MICROPHONE  
WIRELESS LAVALIERE & HANDHELD  
MICROPHONES

## **AMPS & MIXERS**

---

EV SOUND SYSTEM  
6 MIC/6 SPEAKERS  
PV PORTABLE SOUND SYSTEM  
AMPLIFIER - 2 MIC  
YAMAHA SOUND SYSTEM WITH 2 YAMAHA SPEAKERS

## **PLAYERS**

---

CD PLAYER

## **SPEAKER PHONE**

---

SPEAKER PHONE

## **ECO-FRIENDLY**

---

RECYCLE BINS

## **PODIUMS**

---

STANDING PODIUM  
TABLE TOP PODIUM

## **MISCELLANEOUS**

---

LASER POINTER  
EASEL (WOODEN/METAL)  
FLIP CHART  
CHALKBOARD (4' x 8' OR 3' x 5')  
DRY ERASE BOARD (4' x 8')  
DRY ERASE BOARD (3' x 4')  
A/V STAND  
TELESCOPIC LEG  
MASKING TAPE (ROLL)  
EXTENSION CORD  
POWER STRIPS

## **EXHIBIT PURPOSES**

---

ELECTRICAL OUTLET  
**LABOR:**  
PLEASE SPEAK WITH YOUR CROWNE MEETINGS  
DIRECTOR REGARDING LABOR CHARGES.

## **DANCE FLOOR**

---

PORTABLE 12' x 15'  
OLYMPIC ROOM PERMANENT 14'6" x 22'

## **STAGE IN OLYMPIC ROOM**

---

18' WIDE x 16' DEEP x 10" HIGH

## **PORTABLE PLATFORM RISERS**

---

FOUR (4) SECTIONS - 6' x 8' BLACK DECK  
16" HIGH (2 GRAY STEP UNITS WITH 1 STEP,  
CHAIR STOP)  
16 PIECES OF 4' EDGING AND BLACK SKIRTING  
4 SECTIONS OF 8'

TEN (10) SECTIONS OF 4' x 8' MAROON CARPET DECK  
6" HIGH

## **COAT RACKS**

---









SAND COLORED PORTABLE  
GRAY COLORED PORTABLE FOLDING

We have a Business Center with 2 Desktop Computers and 1 Black & White Printer/Copier.

We can provide a laptop computer or color printer upon request.

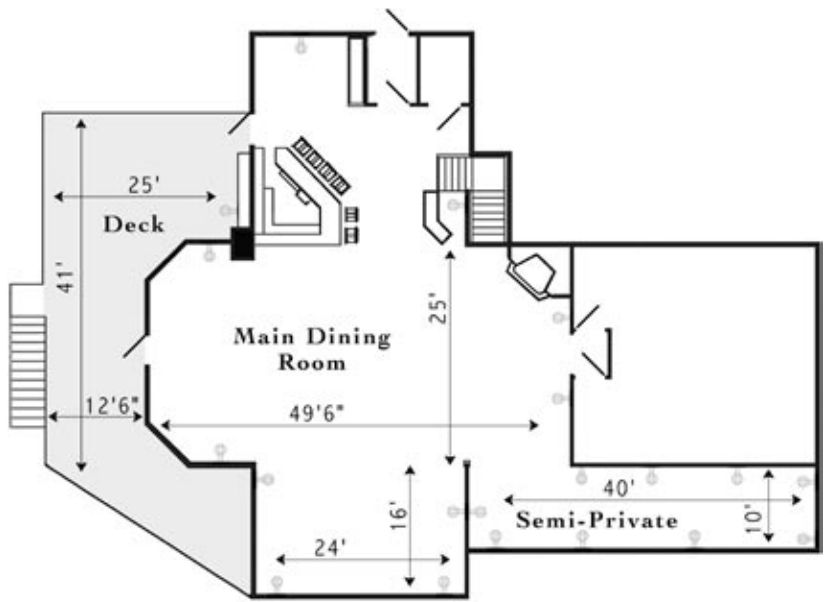
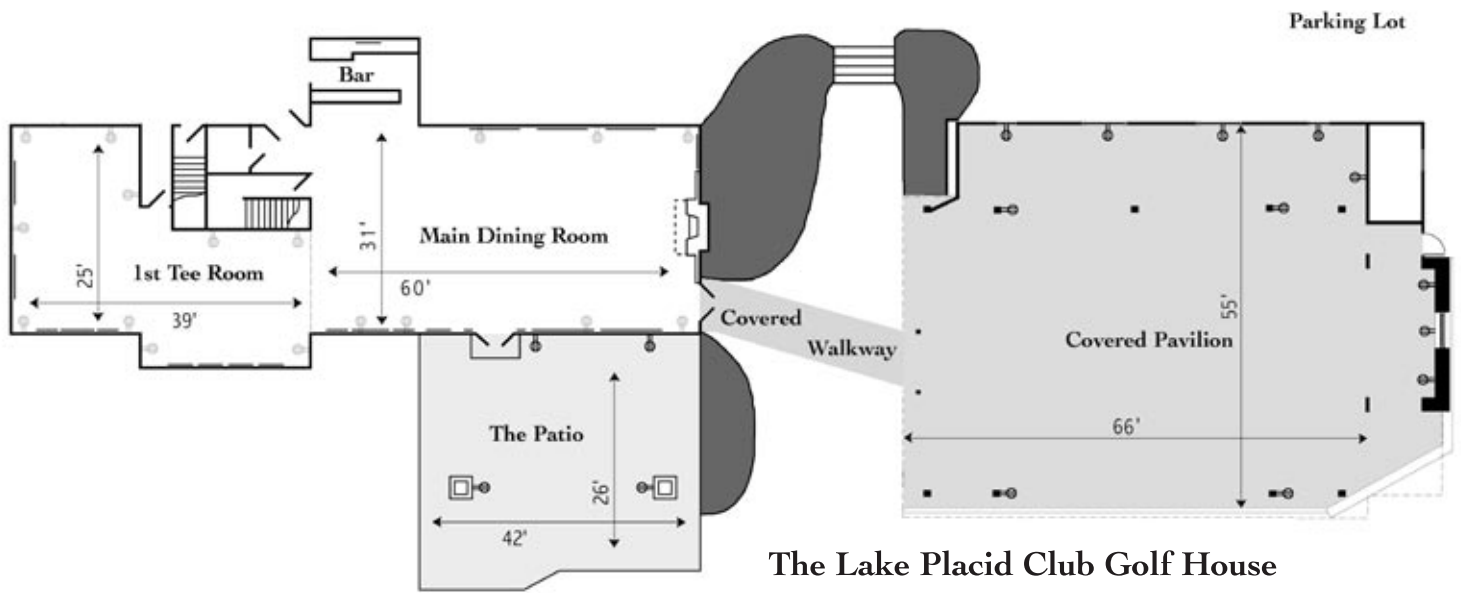
Please speak with your Crowne Meetings Director regarding prices.

Free Wireless Technical Support from NoWirz by calling 1-877-898-9392.

| ROOM SPECIFICATIONS                      |             |         |                |  |  |  |  |  |  |  |  |
|--|-------------|---------|----------------|---|---|---|---|---|---|---|---|
| ROOM                                     | DIMENSIONS  | SQ. FT. | CEILING HEIGHT | CLASS ROOM  | THEATER   | CONF.   | U-SHAPE   | MAX. BANQUET  | ROUNDS OF 8   | RECEPTION   | 8x10 BOOTHS   |
| Olympic Room (1,2,3,4)                   | 58' x 116'  | 6,728   | 12'            | 480   | 750   | -   | -   | 700   | 550   | 1200  | 41  |
| Olympic Stage                            | 16'6" x 18' | 300     | 11'            | -   | -   | -   | -   | -   | -   | -   | -   |
| Olympic 1                                | 28' x 58'   | 1,620   | 12'            | 90  | 150   | 48  | 42  | 120   | 90  | 125   | 10  |
| Olympic 2A, 2B, 3A, 3B                   | 28' x 29'   | 810     | 12'            | 35  | 55  | 20  | 18  | 56  | 40  | 60  | 5   |
| Olympic 2A/2B or 3A/3B                   | 28' x 58'   | 1,620   | 12'            | 90  | 150   | 48  | 42  | 120   | 90  | 125   | 10  |
| Olympic 4                                | 28' x 58'   | 1,620   | 12'            | 65  | 100   | 48  | 42  | 120   | 90  | 125   | 11  |
| Olympic 1 & 2                            | 56' x 58'   | 3,248   | 12'            | 200   | 350   | -   | -   | 300   | 260   | 340   | 20  |
| Olympic 3 & 4                            | 56' x 58'   | 3,248   | 12'            | 200   | 350   | -   | -   | 300   | 260   | 340   | 20  |
| Olympic 1, 2 & 3                         | 84' x 58'   | 4,872   | 12'            | 325   | 530   | -   | -   | 460   | 400   | 500   | 30  |
| Olympic 2, 3 & 4                         | 84' x 58'   | 4,872   | 12'            | 325   | 530   | -   | -   | 460   | 400   | 500   | 30  |
| Grand View Room (A/B)                    | 85' x 45'   | 3,825   | 12'            | 250   | 400   | -   | -   | 300   | 224   | 400   | 23  |
| Grand View Room A                        | 30' x 38'   | 1,140   | 12'            | 50  | 75  | 26  | 22  | 120   | 88  | 120   | 7   |
| Grand View Room B                        | 46' x 53'   | 2,438   | 12'            | 150   | 275   | 51  | 45  | 180   | 136   | 250   | 15  |
| Sky Room                                 | 42' x 61'   | 2,562   | 25'            | 125   | 250   | 48  | 42  | 220   | 200   | 250   | 15  |
| Pool Gazebo                              | 58' x 34'   | 1,972   | 25'            | 100   | 250   | -   | -   | 200   | 150   | 300   | 9   |
| ADK Great Room Bar & Lobby               | 47' x 60'   | 2,820   | 30'            | -   | -   | -   | -   | -   | -   | -   | -   |
| Pre-Function Lobby                       | 33' x 18'   | 594     | 9'             | -   | -   | -   | -   | -   | -   | -   | 3   |
| Fireplace Lobby                          | 24' x 28'   | 672     | 9'             | -   | -   | -   | -   | -   | -   | -   | 4   |
| Central Lobby                            | 18' x 17'   | 306     | 9'             | -   | -   | -   | -   | -   | -   | 20  | -   |
| Kate Smith Library                       | 27' x 29'   | 783     | 9'             | 35  | 45  | 26  | 21  | 50  | 40  | 50  | 5   |
| Mirror Lake Room (2 <sup>nd</sup> Fl.)   | 29' x 22'   | 638     | 8'             | 35  | 45  | 22  | 18  | -   | -   | 50  | -   |
| High Peaks Room (2 <sup>nd</sup> Fl.)    | 18' x 25' * | 450     | 8'             | 42  | 50  | 25  | 20  | 25  | -   | 60  | -   |
| MacKenzie's Restaurant                   | -           | -       | -              | -   | -   | -   | -   | 140   | -   | 160   | -   |
| Veranda Sentinel Room                    | 26' x 23'   | 598     | 9'             | 20  | -   | 20  | 16  | 51  | -   | 60  | -   |
| Veranda Hearthside Room                  | 28' x 15'   | 420     | 9'             | 12  | -   | 12  | -   | 12  | -   | 30  | -   |
| Veranda 1 <sup>st</sup> Floor Inside     | -           | 1,020   | 9'             | -   | -   | -   | -   | 70  | -   | 85  | -   |
| Veranda Patio                            | 26' x 18'   | 468     | -              | -   | -   | -   | -   | 32  | -   | 50  | -   |
| Veranda Birch Room (2 <sup>nd</sup> Fl.) | 42' x 16' * | 672     | 9'             | -   | -   | -   | -   | 42  | -   | 65  | -   |
| Veranda Smith Room (2 <sup>nd</sup> Fl.) | 11' x 9'    | 99      | 9'             | -   | -   | 6   | -   | 6   | -   | -   | -   |
| Veranda White Room (2 <sup>nd</sup> Fl.) | 11' x 15'   | 165     | 9'             | -   | -   | 12  | -   | 12  | -   | 20  | -   |
| Golf House Main Dining Rm.               | 60' x 31'   | 1,860   | 9'             | 125   | 200   | -   | -   | 150   | 104   | 195   | -   |
| Golf House First Tee Room                | 25' x 39' * | 1,089   | 9'             | 65  | 110   | 24  | 20  | 100   | 64  | 125   | -   |
| Golf House Main & First Tee              | -           | 2,959   | 9'             | 165   | 225   | -   | -   | 250   | 200   | 305   | -   |
| Golf House Porch (flaps up/down)         | 26' x 42'   | 1,092   | -              | -   | -   | -   | -   | 80/50   | 50/50   | 140/70  | -   |
| Golf House Main, Tee & Porch             | -           | 4,040   | -              | -   | -   | -   | -   | 350   | -   | 445   | -   |
| Golf House Covered Pavilion              | 55' x 66'   | 2,880   | -              | 200   | 325   | -   | -   | 300   | 200   | 350   | -   |
| Golf House Seymour Dunn Rm               | 30' x 14'   | 420     | 8'             | -   | -   | 32  | -   | 32  | 32  | 50  | -   |
| The Boat House Main                      | 40' x 41' * | 1,640   | 25'            | -   | -   | -   | -   | 100   | -   | 130   | -   |
| The Boat House Semi-Private              | 40' x 10'   | 400     | 10'            | -   | 30  | 30  | -   | 28  | -   | 30  | -   |
| Boat House Waterfront Private            | 35' x 22'*  | 780     | 8'             | -   | -   | -   | -   | -   | -   | -   | -   |
| Boat House Waterfront Deck               | 38' x 8"    | 334     | 8'             | -   | -   | -   | -   | -   | -   | -   | -   |

\* Irregular room shape - see floor plans

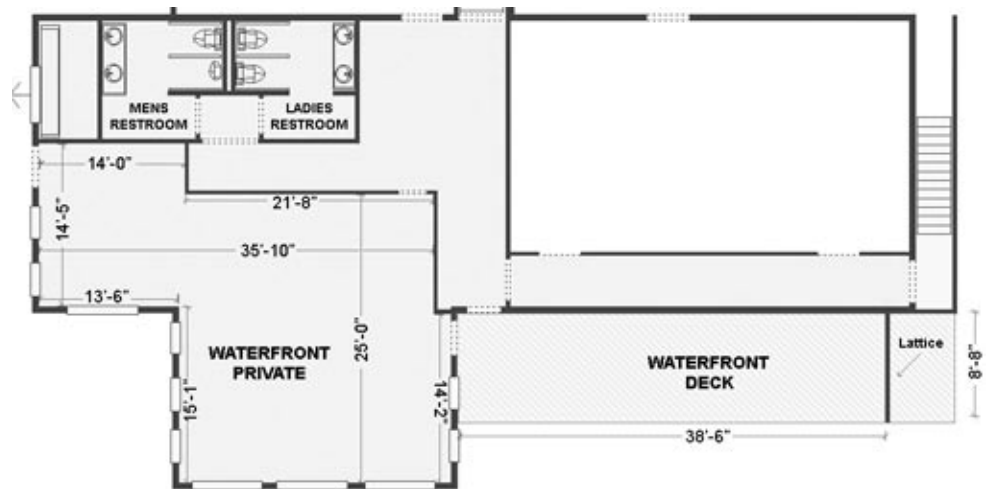
NOTE: Capacity numbers are approximates; they may not take into consideration space required for head tables, podiums, etc. Please consult with your Conference Service Manager to see where your events will best fit into our space.



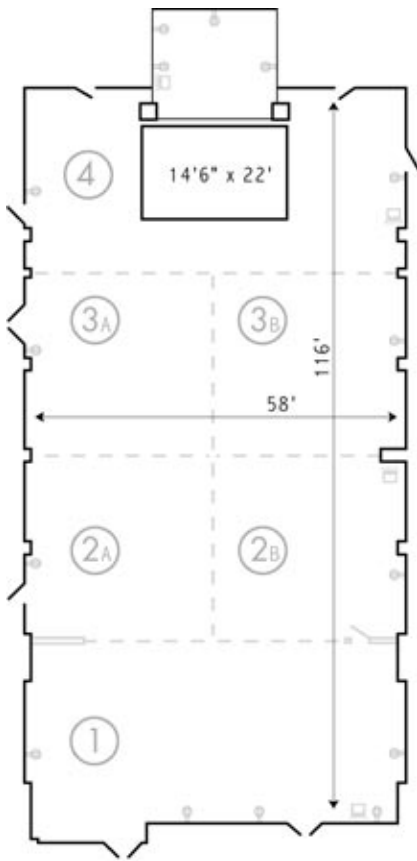
Lake Placid Club Boat House 1st Floor

Access to the Lake Placid Club Beach

Lake Placid Club Boat House Waterfront



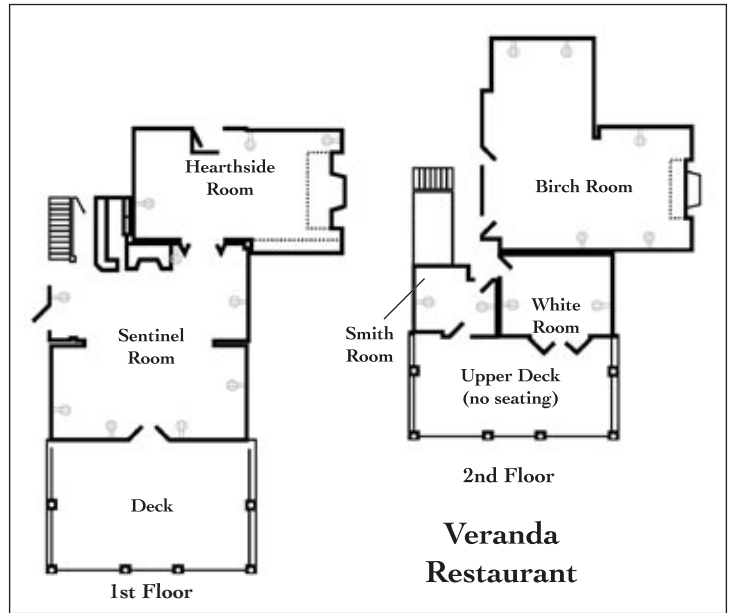
⊞ Electrical Outlet



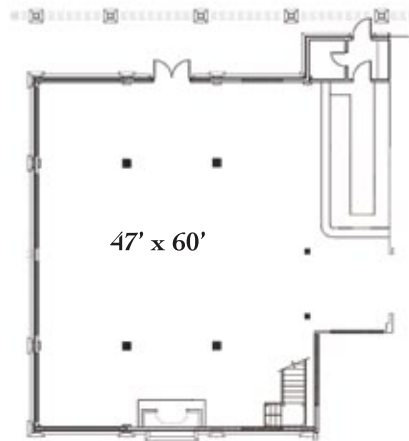
Olympic Room

|   |   |   |   |   |      |      |   |
|---|---|---|---|---|------|------|---|
| 4 | 4 | 4 | 4 | 4 | 4    | 4    | 4 |
| 3 | 3 | 3 | 3 | 3 | 3    | 3A3B | 3 |
| 2 | 2 | 2 | 2 | 2 | 2A2B | 2    | 2 |
| 1 | 1 | 1 | 1 | 1 | 1    | 1    | 1 |

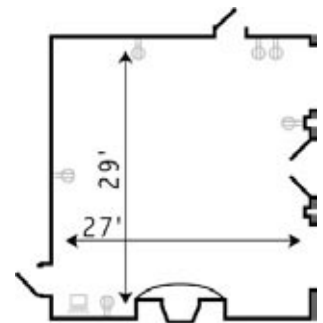
Olympic Room Configurations



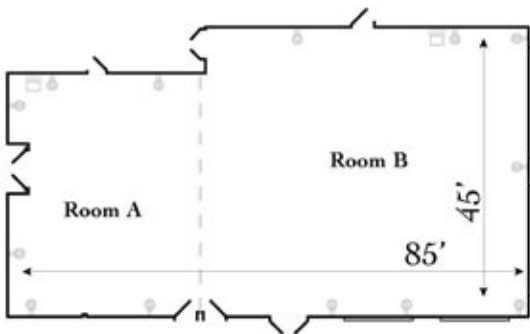
Veranda Restaurant



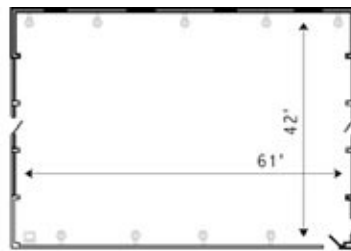
Great Room Lobby



Library



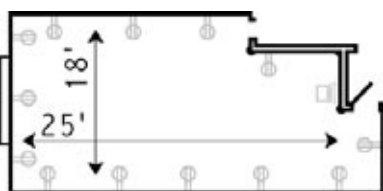
Grandview Room



Sky Room

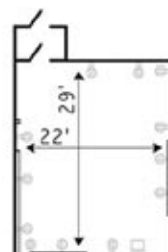


Pool Gazebo



High Peaks Room

◀ 2ND FLOOR ▶

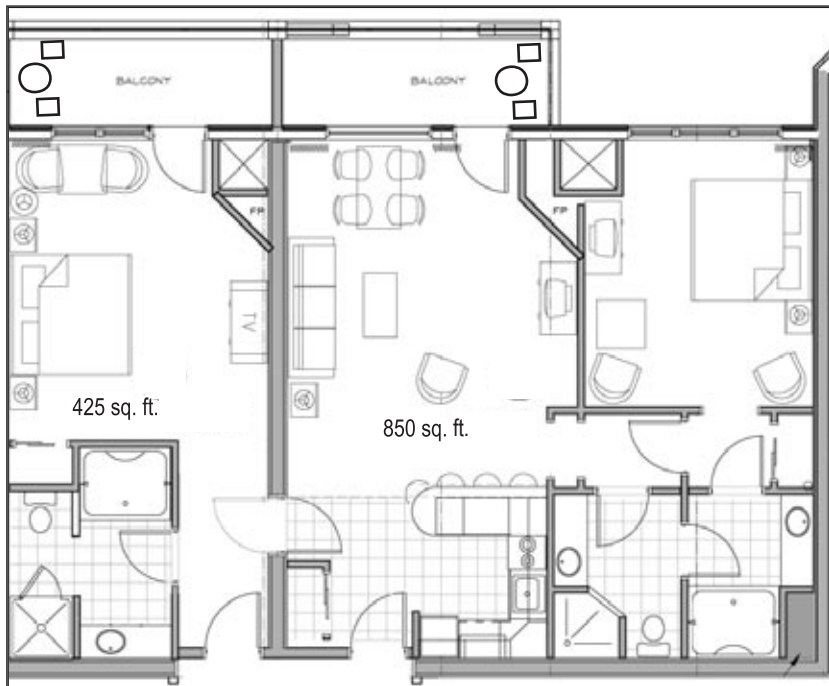


Mirror Lake Room

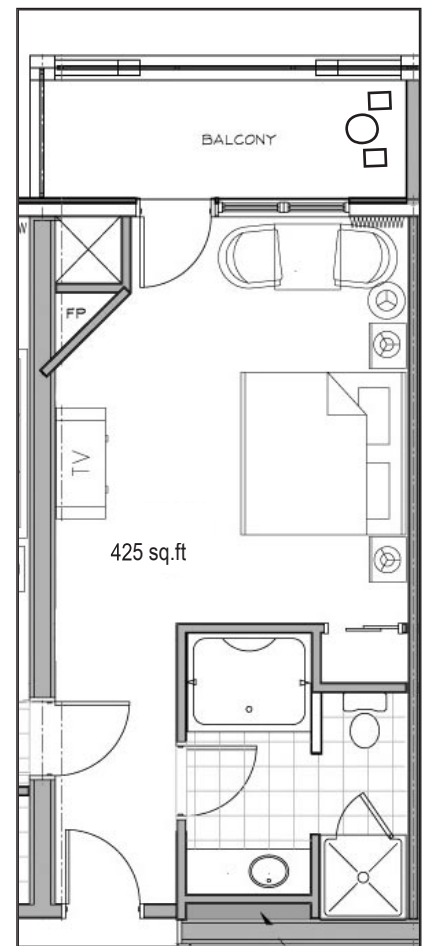
⊖ Electrical Outlet

⊞ Internet Outlet

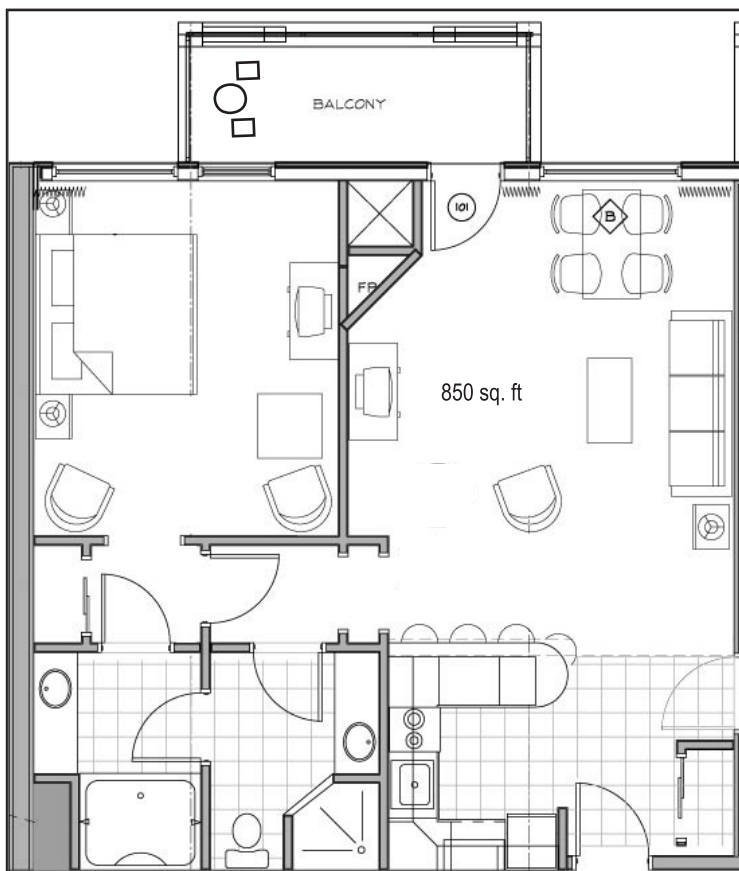




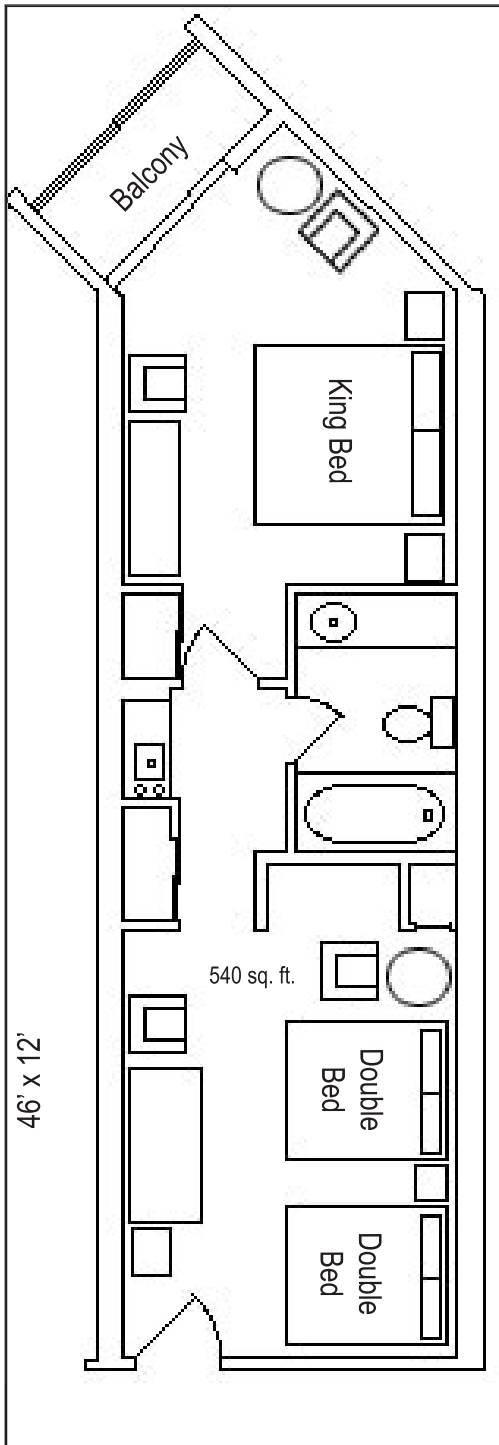
Adirondack Two Bedroom Suite



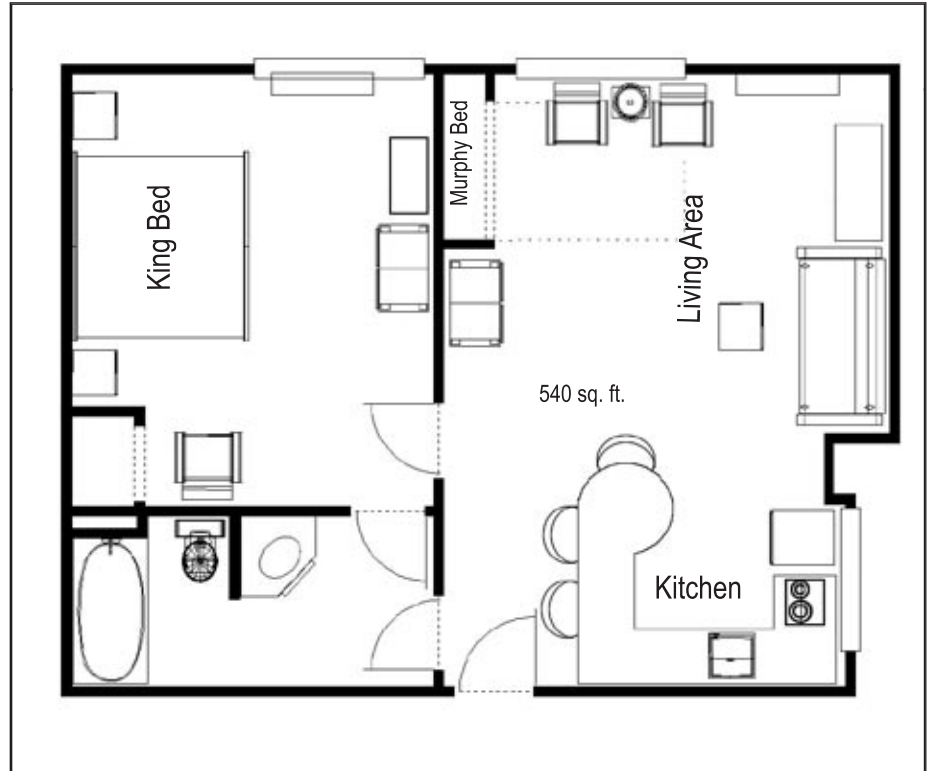
Adirondack King Bedded Room



Adirondack One Bedroom Suite



Family Unit - Main Hotel



Suite 280 - Main Hotel



**DIRECTIONS TO THE RESORT**

The Crowne Plaza Resort & Golf Club is located at 1 Olympic Drive in the center of the village (#1 on the map). Arriving from the east or south-east via route 86 or 73, look for the Olympic Arena complex on your left (#4 on the map). Olympic Drive is the first street on the left past the Olympic Arenas, the hotel is located at the top of the hill on your left.

From the north-west via route 86, drive into town, turning right onto Main Street and look for a large municipal parking lot on your right hand side. Olympic Drive is the first right turn after the parking lot. The hotel is located at the top of the hill on your left.

**AIR TRAVEL TO LAKE PLACID**

**Lake Placid Airport**  
The Lake Placid Municipal Airport is one mile south of the village on Route 73. Open 9 a.m. to 5 p.m. daily. Runway: 4,300 ft. Services: Air Charter, tie down, and plane repairs. (518) 523-2473.

**Adirondack Regional Airport**  
In Saranac Lake, 16 miles from Lake Placid on Route 86. Commercial flights: Continental Connections. Flights available from many eastern locations. Continental Connections flight information: (800) 523-3273. Airport telephone: (518) 891-2290.

**DRIVING TO LAKE PLACID**

**From New York City & New Jersey**  
Take the New York State Thruway (I-87) north to Exit 24 (Albany). Take I-87 north to Exit 30. Pick up Route 9 north and follow it for two miles to Route 73. Continue on 73 for 28 miles to Lake Placid.

**From Buffalo, Rochester & Syracuse**  
Take I-90 (New York State Thruway) east to Exit 36 (Syracuse). Pick up I-81 north to Watertown. Take Route 3 and follow it east to Saranac Lake, then follow Route 86 east to Lake Placid.

**From Boston, Springfield & Hartford**  
Take Massachusetts Turnpike (I-90) to Albany. Pick up I-787 north to Cohoes. Connect with Route 7 west to I-87 north. Follow I-87 (Northway) to Exit 30, then use final directions: "From New York City & New Jersey" - see above.

**From Toronto**  
Take the 401 east to Cornwall Bridge to USA. Take Route 37 east to Malone. Follow Route 30 south to Paul Smiths and pick up Route 86. Continue on 86 to Saranac Lake and Lake Placid.

**From Ottawa**  
Take routes south to Cornwall Bridge to USA. Pickup Route 37 east to Malone. Take Route 30 south to Paul Smiths and pick up Route 86. Continue on 86 to Saranac Lake and Lake Placid.

**From Montreal**  
Take Route 15 south to Champlain Crossing, connecting with I-87 south. Take Exit 34 west, following Route 9N, then follow Route 86 to Whiteface Mountain/Lake Placid area.

**From Vermont, crossing at Crown Point Bridge**

Travel south on Route 7 towards Vergennes and follow Route 22A to Addison. In Addison take Route 17 and follow signs for Bridge to New York. After crossing the bridge, follow Route 9N/22 north through Port Henry and continue to Westport. In Westport pick up Route 9N to Elizabethtown. Stay on Route 9N through Elizabethtown and continue to Keene/Keene Valley. Turn right onto Route 73 and follow to Lake Placid.

**FERRIES FROM VERMONT**

802-864-9804 www.ferries.com

**Grand Isle - Plattsburgh (year-round)**  
From I-89 take Exit 17 and drive 12 miles to Ferry. (Twelve-minute ferry ride.) At Plattsburgh dock follow signs for Route 87. Take Route 87 south to Exit 34. Turn left onto Route 9N. Stay on Route 9N through Keeseville and continue to Jay, turn right onto Route 86 and follow through Wilmington to Lake Placid.

**Burlington - Port Kent (seasonal)**  
Take I-89, Exit 14W, and drive 2 miles to Ferry. (One hour ferry ride.) At Port Kent dock take Route 373 and turn left onto Route 9N. Stay on 9N through Keeseville and continue to Jay, turn right onto Route 86 and follow through Wilmington to Lake Placid.

**Charlotte - Essex (seasonal)**  
From US 7 take Route F-5 at Charlotte and drive 3 miles to Ferry (twenty-minute ride). At Essex dock follow Route 9N/22 south and pick up Route 9N to Elizabethtown and on to Keene/Keene Valley. Turn right onto Route 73 and follow to Lake Placid.

**TRAIN TRAVEL TO LAKE PLACID**

**Amtrak**  
Amtrak operates between New York City and Montreal. Local stop in Westport, NY (40 minutes from Lake Placid). For information call (800) USA-RAIL. Shuttle service to Lake Placid must be arranged by reservation: (800) 397-2602.

**BUS TRAVEL TO LAKE PLACID**

**Adirondack Trailways**  
Service between Lake Placid, Albany and New York City and suburbs. (800) 225-6815.

**TAXI SERVICE IN LAKE PLACID**

**Rick's Taxi** (518) 523-4741  
**Corrow's Adirondack Taxi** (518) 523-9091

|                           |                       |
|---------------------------|-----------------------|
| Albany - 2 Hrs 15 Min     | New York City - 5 Hrs |
| Binghamton - 4 Hrs 15 Min | Utica - 3 Hrs         |
| Buffalo - 6 Hrs 30 Min    | Montréal - 2 Hrs      |
| Boston - 4 Hrs 30 Min     | Ottawa - 3 Hrs        |
| Rochester - 5 Hrs         | Toronto - 6 Hrs       |
| Syracuse - 4 Hrs          | Kingston - 3 Hrs      |

Driving times are approximate and will change depending on route and road conditions